

Illinois

State Health Department Website: dph.illinois.gov

Summary

Strengths:

- Low prevalence of 2+ adverse childhood experiences
- High percentage of fluoridated water
- Low prevalence of frequent mental distress

Challenges:

- High prevalence of excessive drinking
- High residential segregation
- High premature death racial inequality

Highlights:

SMOKING

▼31% between 2011 and 2019 from 20.9% to 14.5% of adults

HIGH-SPEED INTERNET

▲9% between 2015 and 2018 from 81.7% to 89.0% of households

SEVERE HOUSING PROBLEMS

▼9% between 2007-2011 and 2013-2017 from 18.5% to 16.9% of occupied housing units

INCOME INEQUALITY

▲10% between 2007 and 2019 from 4.53 to 4.97

FREQUENT MENTAL DISTRESS

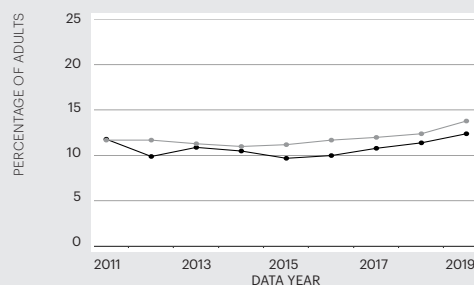
▲28% between 2015 and 2019 from 9.7% to 12.4% of adults

SUICIDE

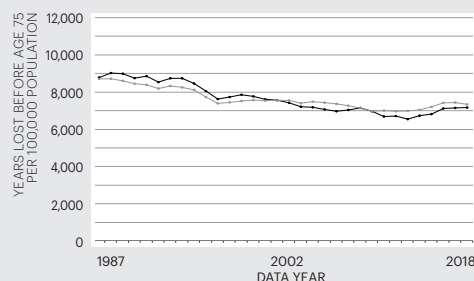
▲26% between 2009 and 2018 from 9.2 to 11.6 deaths per 100,000 population

Trends

FREQUENT MENTAL DISTRESS



PREMATURE DEATH



State — Nation —

For source details and methodology visit www.AmericasHealthRankings.org.

Economic Hardship Index

The economic hardship index compares financial strain between states. It combines six population-level social and economic measures to provide a more complete picture of the difficulties faced by communities than a single measure could provide.

Measure	State Value
Crowded Housing (units with more than one person/room)	2.3%
Dependency (ages 0-17 or ages 65+)	38.4%
Education (ages 25+ without a high school diploma)	10.2%
Per Capita Income	\$37,728
Poverty (households below the poverty level)	11.8%
Unemployment (ages 16-64)	5.0%

Multiple Chronic Conditions

Chronic conditions are medical conditions that last more than a year, require ongoing medical attention and/or limit activities of daily living. Adults with multiple chronic conditions represent one of the highest-need segments of the population.

Measure	State Value
Arthritis	24.7%
Asthma	8.2%
Cancer (excluding skin)	6.4%
Cardiovascular Disease	7.9%
Chronic Kidney Disease	2.7%
Chronic Obstructive Pulmonary Disease	5.8%
Depression	18.3%
Diabetes	11.3%

Measures

Rating	Rank
+++++	1-10
++++	11-20
+++	21-30
++	31-40
+	41-50

		Rating	Value	Rank	Healthiest State
SOCIAL & ECONOMIC FACTORS		+++	0.043	24	0.965
Community and Family Safety	Occupational Fatalities (deaths per 100,000 workers)	+++++	3.8	10	2.9
	Public Health Funding (dollars per person)	++	\$79	37	\$289
	Violent Crime (offenses per 100,000 population)	++	407	33	115
Economic Resources	Economic Hardship Index (index from 1-100)	+++	41	21	1
	Food Insecurity (% of households)	++++	10.7	19	7.8
	Income Inequality (80-20 ratio)	+	4.97	42	3.70
Education	High School Graduation (% of students)	+++	86.5	24	91.4
	High School Graduation Racial Gap (percentage point difference)	++++	13.5	20	3.9
Social Support and Engagement	Adverse Childhood Experiences (% of children ages 0-17)	+++++	12.0	5	8.9
	High-speed Internet (% of households)	++++	89.0	18	92.9
	Residential Segregation (index from 0-100)	+	69	47	42
	Volunteerism (% of adults)	++	28.1	37	51.0
	Voter Participation — Midterm (% of U.S. citizens)	+++	53.0	26	65.6
PHYSICAL ENVIRONMENT		++	0.239	32	0.816
Air and Water Quality	Air Pollution (micrograms of fine particles per cubic meter)	+	9.5	49	4.1
	Drinking Water Violations (% of community water systems)	++++	0.1	12	0.0
	Non-smoking Regulation (% of population)*	+++++	100.0	1	100.0
	Risk-screening Environmental Indicator Score (unitless score)	+	21,508,993	45	317
	Water Fluoridation (% of population served)	+++++	98.2	3	99.8
Climate Change	Climate Change Policies (number of four policies)*	+++	2	22	4
	Transportation Energy Use (trillions of BTUs per 100,000 population)*	++++	8.0	20	5.8
Housing and Transit	Drive Alone to Work (% of workers)	+++++	72.4	8	52.8
	Housing With Lead Risk (% of housing stock)	+	24.9	44	5.2
	Severe Housing Problems (% of occupied housing units)	++	16.9	34	11.2
CLINICAL CARE		+++	0.015	24	1.443
Access to Care	Avoided Care Due to Cost (% of adults)	+++	13.3	29	8.2
	Providers				
	Dental Providers (number per 100,000 population)	+++++	71.7	8	90.6
	Mental Health Providers (number per 100,000 population)	+++	253.7	27	666.4
	Primary Care Providers (number per 100,000 population)	+++	249.6	28	362.8
Preventive Clinical Services	Uninsured (% of population)	+++	7.4	21	3.0
	Colorectal Cancer Screening (% of adults ages 50-75)	+	66.7	41	77.1
	Dental Visit (% of adults)	++++	68.1	18	76.5
	Immunizations				
	Childhood Immunizations (% by age 35 months)	++++	79.4	16	86.6
Quality of Care	Flu Vaccination (% adults)	+	38.8	42	50.5
	HPV Vaccination (% of adolescents ages 13-17)	+++	54.9	25	78.9
	Dedicated Health Care Provider (% of adults)	++++	79.7	16	88.4
	Preventable Hospitalizations (discharges per 100,000 Medicare enrollees)	+	4,954	44	1,971
BEHAVIORS		+++	0.108	23	1.072
Sleep Health	Insufficient Sleep (% of adults)	++++	33.2	17	28.7
Nutrition and Physical Activity	Exercise (% of adults)	+++	23.4	23	28.5
	Fruit and Vegetable Consumption (% of adults)	++	6.9	36	14.1
	Physical Inactivity (% of adults)	+++	25.6	21	18.5
Sexual Health	Chlamydia (cases per 100,000 population)	+	604.0	42	198.2
	High-risk HIV Behaviors (% of adults)	++++	5.9	16	4.5
	Teen Births (births per 1,000 females ages 15-19)	++++	15.8	20	7.2
Tobacco Use	E-cigarette Use (% of adults)*		—		4.3
	Smoking (% of adults)	++++	14.5	13	7.9
ALL DETERMINANTS		+++	0.081	25	0.865
HEALTH OUTCOMES		+++	-0.048	28	0.846
Behavioral Health	Depression (% of adults)*	++++	18.3	20	11.8
	Excessive Drinking (% of adults)	+	21.6	43	12.0
	Frequent Mental Distress (% of adults)	++++	12.4	15	10.6
	Non-medical Drug Use (% of adults)	+++	12.0	30	6.4
Mortality	Drug Deaths (deaths per 100,000 population)*	+++	21.2	25	6.8
	Premature Death (years lost before age 75 per 100,000 population)	+++	7,178	22	5,648
	Premature Death Racial Inequality (ratio)	++	1.8	36	1.0
	Suicide (deaths per 100,000 population)*	+++++	11.6	8	8.6
Physical Health	Frequent Physical Distress (% of adults)	++++	11.5	15	9.3
	Low Birthweight (% of live births)	+++	8.5	29	5.9
	Low Birthweight Racial Gap (percentage point difference)	++	7.4	40	2.4
	Multiple Chronic Conditions (% of adults)	++++	8.9	15	6.4
	Risk Factors				
	High Blood Pressure (% of adults)*	+++	32.2	24	25.8
	High Cholesterol (% of adults)*	++++	31.5	17	28.1
OVERALL			0.049	—	0.723

* Measure not included in overall score. For measure definitions, source details and methodology, visit www.AmericasHealthRankings.org.
 —Indicates data missing or suppressed.