

Kansas

State Health Department Website: kdheks.gov

Summary

Strengths:

- Low income inequality
- Low prevalence of severe housing problems
- Low prevalence of low birthweight

Challenges:

- High prevalence of household food insecurity
- Low prevalence of exercise
- High prevalence of obesity

Highlights:

OCCUPATIONAL FATALITIES

▼ **52%** between 1988-1990 and 2016-2018 from 11.5 to 5.5 deaths per 100,000 workers

HIGH-SPEED INTERNET

▲ **9%** between 2015 and 2018 from 81.4% to 88.4% of households

HPV IMMUNIZATION

▲ **44%** between 2017 and 2019 from 34.4% to 49.5% of adolescents ages 13-17

CHLAMYDIA

▲ **66%** between 2007 and 2018 from 294.7 to 488.5 cases per 100,000 population

FREQUENT PHYSICAL DISTRESS

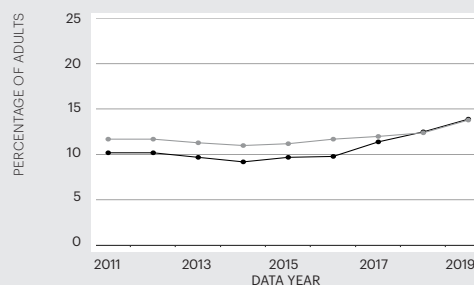
▲ **16%** between 2015 and 2019 from 10.0% to 11.6% of adults

SUICIDE

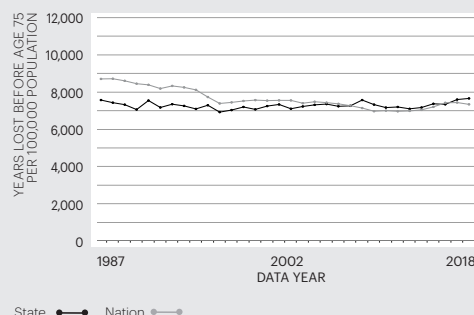
▲ **41%** between 2009 and 2018 from 13.8 to 19.5 deaths per 100,000 population

Trends

FREQUENT MENTAL DISTRESS



PREMATURE DEATH



State —●— Nation —○—

For source details and methodology visit www.AmericasHealthRankings.org.

Economic Hardship Index

The economic hardship index compares financial strain between states. It combines six population-level social and economic measures to provide a more complete picture of the difficulties faced by communities than a single measure could provide.

Measure	State Value
Crowded Housing (units with more than one person/room)	1.9%
Dependency (ages 0-17 or ages 65+)	40.4%
Education (ages 25+ without a high school diploma)	8.2%
Per Capita Income	\$32,885
Poverty (households below the poverty level)	11.6%
Unemployment (ages 16-64)	3.9%

Multiple Chronic Conditions

Chronic conditions are medical conditions that last more than a year, require ongoing medical attention and/or limit activities of daily living. Adults with multiple chronic conditions represent one of the highest-need segments of the population.

Measure	State Value
Arthritis	25.6%
Asthma	9.9%
Cancer (excluding skin)	7.6%
Cardiovascular Disease	8.2%
Chronic Kidney Disease	2.7%
Chronic Obstructive Pulmonary Disease	6.4%
Depression	19.9%
Diabetes	10.8%

Measures

Rating	Rank
+++++	1-10
++++	11-20
+++	21-30
++	31-40
+	41-50

		Rating	Value	Rank	Healthiest State
SOCIAL & ECONOMIC FACTORS		+++	0.168	21	0.965
Community and Family Safety	Occupational Fatalities (deaths per 100,000 workers)	++	5.5	34	2.9
	Public Health Funding (dollars per person)	++	\$64	40	\$289
	Violent Crime (offenses per 100,000 population)	++	411	34	115
Economic Resources	Economic Hardship Index (index from 1-100)	+++	43	22	1
	Food Insecurity (% of households)	++	13.8	40	7.8
	Income Inequality (80-20 ratio)	+++++	4.27	9	3.70
Education	High School Graduation (% of students)	++++	87.2	18	91.4
	High School Graduation Racial Gap (percentage point difference)	++++	10.7	15	3.9
Social Support and Engagement	Adverse Childhood Experiences (% of children ages 0-17)	+++	15.9	24	8.9
	High-speed Internet (% of households)	+++	88.4	23	92.9
	Residential Segregation (index from 0-100)	++++	54	19	42
	Volunteerism (% of adults)	++++	36.5	12	51.0
	Voter Participation — Midterm (% of U.S. citizens)	++++	56.9	14	65.6
PHYSICAL ENVIRONMENT		++	0.180	35	0.816
Air and Water Quality	Air Pollution (micrograms of fine particles per cubic meter)	+++	7.4	28	4.1
	Drinking Water Violations (% of community water systems)	++	1.2	35	0.0
	Non-smoking Regulation (% of population)*	+++++	100.0	1	100.0
	Risk-screening Environmental Indicator Score (unitless score)	+++	4,579,921	30	317
	Water Fluoridation (% of population served)	++	65.1	33	99.8
Climate Change	Climate Change Policies (number of four policies)*	++	0	36	4
	Transportation Energy Use (trillions of BTUs per 100,000 population)*	++	9.8	35	5.8
Housing and Transit	Drive Alone to Work (% of workers)	+	82.7	47	52.8
	Housing With Lead Risk (% of housing stock)	++	21.4	34	5.2
	Severe Housing Problems (% of occupied housing units)	+++++	12.9	7	11.2
CLINICAL CARE		+++	-0.082	28	1.443
Access to Care	Avoided Care Due to Cost (% of adults)	+++	13.1	27	8.2
	Providers				
	Dental Providers (number per 100,000 population)	++	53.7	36	90.6
	Mental Health Providers (number per 100,000 population)	++	209.7	36	666.4
	Primary Care Providers (number per 100,000 population)	+++	255.1	25	362.8
Preventive Clinical Services	Uninsured (% of population)	++	9.2	32	3.0
	Colorectal Cancer Screening (% of adults ages 50-75)	++	67.3	37	77.1
	Dental Visit (% of adults)	+++	67.9	21	76.5
	Immunizations				
	Childhood Immunizations (% by age 35 months)	++	75.2	33	86.6
Quality of Care	Flu Vaccination (% adults)	++++	46.2	17	50.5
	HPV Vaccination (% of adolescents ages 13-17)	++	49.5	38	78.9
	Dedicated Health Care Provider (% of adults)	+++	78.2	24	88.4
	Preventable Hospitalizations (discharges per 100,000 Medicare enrollees)	+++	4,014	21	1,971
BEHAVIORS		+++	0.046	26	1.072
Sleep Health	Insufficient Sleep (% of adults)	++++	33.1	16	28.7
Nutrition and Physical Activity	Exercise (% of adults)	++	20.8	38	28.5
	Fruit and Vegetable Consumption (% of adults)	++++	8.6	18	14.1
	Physical Inactivity (% of adults)	++	27.1	31	18.5
Sexual Health	Chlamydia (cases per 100,000 population)	+++	488.5	21	198.2
	High-risk HIV Behaviors (% of adults)	++++	5.8	13	4.5
	Teen Births (births per 1,000 females ages 15-19)	++	20.0	32	7.2
Tobacco Use	E-cigarette Use (% of adults)*		5.5%		4.3
	Smoking (% of adults)	+++	16.2	27	7.9
ALL DETERMINANTS		+++	0.087	23	0.865
HEALTH OUTCOMES		+++	0.057	26	0.846
Behavioral Health	Depression (% of adults)*	+++	19.9	26	11.8
	Excessive Drinking (% of adults)	+++	18.7	27	12.0
	Frequent Mental Distress (% of adults)	+++	13.9	27	10.6
	Non-medical Drug Use (% of adults)	+++	10.8	23	6.4
Mortality	Drug Deaths (deaths per 100,000 population)*	+++++	12.3	10	6.8
	Premature Death (years lost before age 75 per 100,000 population)	+++	7,668	30	5,648
	Premature Death Racial Inequality (ratio)	+++	1.5	27	1.0
	Suicide (deaths per 100,000 population)*	++	19.5	34	8.6
Physical Health	Frequent Physical Distress (% of adults)	++++	11.6	16	9.3
	Low Birthweight (% of live births)	++++	7.4	14	5.9
	Low Birthweight Racial Gap (percentage point difference)	+++	6.5	27	2.4
	Multiple Chronic Conditions (% of adults)	+++	9.6	26	6.4
	Risk Factors				
	High Blood Pressure (% of adults)*	++	33.5	31	25.8
	High Cholesterol (% of adults)*	++	34.9	36	28.1
	Obesity (% of adults)	++	35.2	39	23.8
OVERALL			0.078	—	0.723

* Measure not included in overall score. For measure definitions, source details and methodology, visit www.AmericasHealthRankings.org.
 —Indicates data missing or suppressed.