

Mississippi

State Health Department Website: msdh.ms.gov

Summary

Strengths:

- Low prevalence of excessive drinking
- Low racial gap in high school graduation
- Low residential segregation

Challenges:

- High economic hardship index score
- Low prevalence of exercise
- High premature death rate

Highlights:

FOOD INSECURITY

▼ **24%** between 2013-2015 and 2016-2018 from 20.8% to 15.9% of households

ADULTS WHO AVOIDED CARE DUE TO COST

▼ **26%** between 2011 and 2019 from 23.3% to 17.2%

HIGH-SPEED INTERNET

▲ **23%** between 2015 and 2018 from 65.6% to 80.6% of households

HIGH SCHOOL GRADUATION RACIAL GAP

▲ **12%** between 2017 and 2018 from 7.8 to 8.7 percentage points

LOW BIRTHWEIGHT

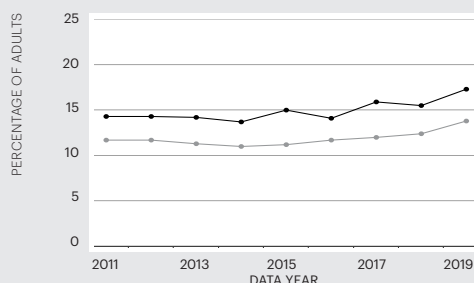
▲ **26%** between 1991 and 2018 from 9.6% to 12.1% of live births

FREQUENT MENTAL DISTRESS

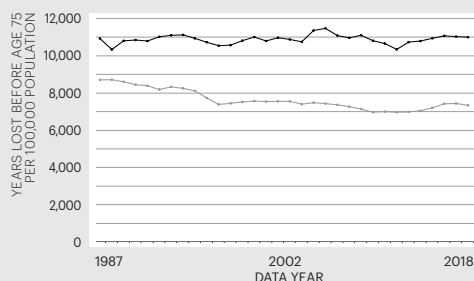
▲ **26%** between 2014 and 2019 from 13.7% to 17.3% of adults

Trends

FREQUENT MENTAL DISTRESS



PREMATURE DEATH



State — Nation —

For source details and methodology visit www.AmericasHealthRankings.org.

Economic Hardship Index

The economic hardship index compares financial strain between states. It combines six population-level social and economic measures to provide a more complete picture of the difficulties faced by communities than a single measure could provide.

| Measure | State Value |
|--|-------------|
| Crowded Housing (units with more than one person/room) | 2.6% |
| Dependency (ages 0-17 or ages 65+) | 39.8% |
| Education (ages 25+ without a high school diploma) | 14.7% |
| Per Capita Income | \$25,301 |
| Poverty (households below the poverty level) | 18.9% |
| Unemployment (ages 16-64) | 6.8% |

Multiple Chronic Conditions

Chronic conditions are medical conditions that last more than a year, require ongoing medical attention and/or limit activities of daily living. Adults with multiple chronic conditions represent one of the highest-need segments of the population.

| Measure | State Value |
|---------------------------------------|-------------|
| Arthritis | 28.9% |
| Asthma | 9.9% |
| Cancer (excluding skin) | 6.6% |
| Cardiovascular Disease | 11.3% |
| Chronic Kidney Disease | 2.9% |
| Chronic Obstructive Pulmonary Disease | 9.4% |
| Depression | 20.6% |
| Diabetes | 14.8% |

Measures

| Rating | Rank |
|--------|-------|
| +++++ | 1-10 |
| ++++ | 11-20 |
| +++ | 21-30 |
| ++ | 31-40 |
| + | 41-50 |

| | | Rating | Value | Rank | Healthiest State |
|--|--|----------|---------------|-----------|------------------|
| SOCIAL & ECONOMIC FACTORS | | + | -0.674 | 47 | 0.965 |
| Community and Family Safety | Occupational Fatalities (deaths per 100,000 workers) | + | 8.5 | 47 | 2.9 |
| | Public Health Funding (dollars per person) | +++ | \$87 | 29 | \$289 |
| | Violent Crime (offenses per 100,000 population) | ++++ | 278 | 14 | 115 |
| Economic Resources | Economic Hardship Index (index from 1-100) | + | 100 | 50 | 1 |
| | Food Insecurity (% of households) | + | 15.9 | 49 | 7.8 |
| | Income Inequality (80-20 ratio) | + | 5.37 | 48 | 3.70 |
| Education | High School Graduation (% of students) | ++ | 84.0 | 32 | 91.4 |
| | High School Graduation Racial Gap (percentage point difference) | +++++ | 8.7 | 7 | 3.9 |
| Social Support and Engagement | Adverse Childhood Experiences (% of children ages 0-17) | ++ | 18.2 | 40 | 8.9 |
| | High-speed Internet (% of households) | + | 80.6 | 49 | 92.9 |
| | Residential Segregation (index from 0-100) | +++++ | 48 | 7 | 42 |
| | Volunteerism (% of adults) | + | 23.8 | 49 | 51.0 |
| | Voter Participation — Midterm (% of U.S. citizens) | +++ | 54.2 | 21 | 65.6 |
| PHYSICAL ENVIRONMENT | | + | -0.246 | 47 | 0.816 |
| Air and Water Quality | Air Pollution (micrograms of fine particles per cubic meter) | ++ | 7.8 | 31 | 4.1 |
| | Drinking Water Violations (% of community water systems) | + | 5.5 | 49 | 0.0 |
| | Non-smoking Regulation (% of population)* | ++ | 31.1 | 34 | 100.0 |
| | Risk-screening Environmental Indicator Score (unitless score) | ++++ | 2,102,778 | 18 | 317 |
| | Water Fluoridation (% of population served) | ++ | 60.7 | 35 | 99.8 |
| Climate Change | Climate Change Policies (number of four policies)* | ++ | 0 | 36 | 4 |
| | Transportation Energy Use (trillions of BTUs per 100,000 population)* | + | 14.2 | 46 | 5.8 |
| Housing and Transit | Drive Alone to Work (% of workers) | + | 84.8 | 49 | 52.8 |
| | Housing With Lead Risk (% of housing stock) | +++++ | 11.0 | 10 | 5.2 |
| | Severe Housing Problems (% of occupied housing units) | +++ | 15.4 | 29 | 11.2 |
| CLINICAL CARE | | + | -1.100 | 49 | 1.443 |
| Access to Care | Avoided Care Due to Cost (% of adults) | + | 17.2 | 47 | 8.2 |
| | Providers | | | | |
| | Dental Providers (number per 100,000 population) | + | 43.2 | 47 | 90.6 |
| | Mental Health Providers (number per 100,000 population) | + | 173.0 | 42 | 666.4 |
| | Primary Care Providers (number per 100,000 population) | ++ | 232.3 | 33 | 362.8 |
| Preventive Clinical Services | Uninsured (% of population) | + | 13.0 | 46 | 3.0 |
| | Colorectal Cancer Screening (% of adults ages 50-75) | + | 62.6 | 46 | 77.1 |
| | Dental Visit (% of adults) | + | 54.1 | 50 | 76.5 |
| | Immunizations | | | | |
| | Childhood Immunizations (% by age 35 months) | ++++ | 80.0 | 11 | 86.6 |
| Quality of Care | Flu Vaccination (% adults) | + | 39.4 | 41 | 50.5 |
| | HPV Vaccination (% of adolescents ages 13-17) | + | 30.5 | 50 | 78.9 |
| | Dedicated Health Care Provider (% of adults) | ++ | 73.6 | 38 | 88.4 |
| | Preventable Hospitalizations (discharges per 100,000 Medicare enrollees) | + | 5,628 | 49 | 1,971 |
| BEHAVIORS | | + | -1.375 | 49 | 1.072 |
| Sleep Health | Insufficient Sleep (% of adults) | ++ | 37.1 | 35 | 28.7 |
| Nutrition and Physical Activity | Exercise (% of adults) | + | 15.7 | 48 | 28.5 |
| | Fruit and Vegetable Consumption (% of adults) | + | 6.3 | 42 | 14.1 |
| | Physical Inactivity (% of adults) | + | 37.7 | 50 | 18.5 |
| Sexual Health | Chlamydia (cases per 100,000 population) | + | 740.1 | 48 | 198.2 |
| | High-risk HIV Behaviors (% of adults) | ++ | 6.7 | 35 | 4.5 |
| | Teen Births (births per 1,000 females ages 15-19) | + | 27.8 | 49 | 7.2 |
| Tobacco Use | E-cigarette Use (% of adults)* | | 5.6% | | 4.3 |
| | Smoking (% of adults) | + | 20.4 | 46 | 7.9 |
| ALL DETERMINANTS | | + | -0.889 | 49 | 0.865 |
| HEALTH OUTCOMES | | + | -0.975 | 49 | 0.846 |
| Behavioral Health | Depression (% of adults)* | ++ | 20.6 | 32 | 11.8 |
| | Excessive Drinking (% of adults) | +++++ | 14.6 | 5 | 12.0 |
| | Frequent Mental Distress (% of adults) | + | 17.3 | 46 | 10.6 |
| | Non-medical Drug Use (% of adults) | ++ | 12.9 | 36 | 6.4 |
| Mortality | Drug Deaths (deaths per 100,000 population)* | +++++ | 10.6 | 5 | 6.8 |
| | Premature Death (years lost before age 75 per 100,000 population) | + | 11,011 | 49 | 5,648 |
| | Premature Death Racial Inequality (ratio) | +++ | 1.5 | 27 | 1.0 |
| | Suicide (deaths per 100,000 population)* | ++++ | 14.2 | 12 | 8.6 |
| Physical Health | Frequent Physical Distress (% of adults) | ++ | 14.0 | 40 | 9.3 |
| | Low Birthweight (% of live births) | + | 12.1 | 50 | 5.9 |
| | Low Birthweight Racial Gap (percentage point difference) | + | 8.4 | 47 | 2.4 |
| | Multiple Chronic Conditions (% of adults) | + | 13.2 | 44 | 6.4 |
| | Risk Factors | | | | |
| | High Blood Pressure (% of adults)* | + | 43.6 | 49 | 25.8 |
| | High Cholesterol (% of adults)* | + | 36.8 | 45 | 28.1 |
| | Obesity (% of adults) | + | 40.8 | 50 | 23.8 |
| OVERALL | | | -0.915 | — | 0.723 |

* Measure not included in overall score. For measure definitions, source details and methodology, visit www.AmericasHealthRankings.org.

— Indicates data missing or suppressed.