

New York

State Health Department Website: health.ny.gov

Summary

Strengths:

- Low prevalence of 2+ adverse childhood experiences
- Low prevalence of cigarette smoking
- Low premature death rate

Challenges:

- Low immunization coverage among children
- High income inequality
- High residential segregation

Highlights:

PREMATURE DEATH RACIAL INEQUALITY (RATIO)

▼19% between 2006-2008 and 2016-2018 from 1.6 to 1.3

FOOD INSECURITY

▼26% between 2013-2015 and 2016-2018 from 14.1% to 10.5% of households

EXERCISE

▲22% between 2017 and 2019 from 19.8% to 24.1% of adults

CHLAMYDIA

▲44% between 2007 and 2018 from 418.3 to 602.4 cases per 100,000 population

OBESITY

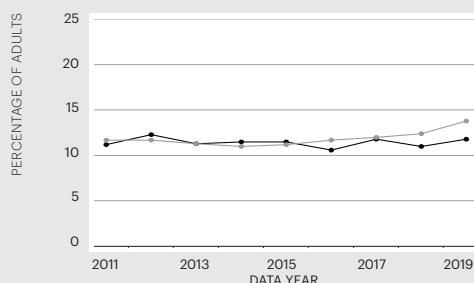
▲15% between 2012 and 2019 from 23.6% to 27.1% of adults

SUICIDE

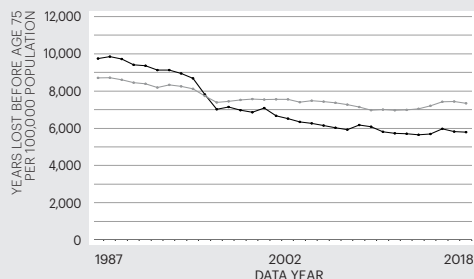
▲21% between 2009 and 2018 from 7.2 to 8.7 deaths per 100,000 population

Trends

FREQUENT MENTAL DISTRESS



PREMATURE DEATH



State — Nation —

For source details and methodology visit www.AmericasHealthRankings.org.

Economic Hardship Index

The economic hardship index compares financial strain between states. It combines six population-level social and economic measures to provide a more complete picture of the difficulties faced by communities than a single measure could provide.

Measure	State Value
Crowded Housing (units with more than one person/room)	4.9%
Dependency (ages 0-17 or ages 65+)	37.6%
Education (ages 25+ without a high school diploma)	12.4%
Per Capita Income	\$41,857
Poverty (households below the poverty level)	13.3%
Unemployment (ages 16-64)	4.5%

Multiple Chronic Conditions

Chronic conditions are medical conditions that last more than a year, require ongoing medical attention and/or limit activities of daily living. Adults with multiple chronic conditions represent one of the highest-need segments of the population.

Measure	State Value
Arthritis	22.2%
Asthma	9.3%
Cancer (excluding skin)	6.9%
Cardiovascular Disease	7.9%
Chronic Kidney Disease	2.5%
Chronic Obstructive Pulmonary Disease	5.8%
Depression	15.3%
Diabetes	10.5%

Measures

Rating	Rank
+++++	1-10
++++	11-20
+++	21-30
++	31-40
+	41-50

		Rating	Value	Rank	Healthiest State
SOCIAL & ECONOMIC FACTORS		++	-0.213	37	0.965
Community and Family Safety	Occupational Fatalities (deaths per 100,000 workers)	+++++	3.1	3	2.9
	Public Health Funding (dollars per person)	+++++	\$147	6	\$289
	Violent Crime (offenses per 100,000 population)	+++	359	26	115
Economic Resources	Economic Hardship Index (index from 1-100)	+++	46	27	1
	Food Insecurity (% of households)	++++	10.5	16	7.8
	Income Inequality (80-20 ratio)	+	5.74	50	3.70
Education	High School Graduation (% of students)	++	82.3	37	91.4
	High School Graduation Racial Gap (percentage point difference)	+	21.1	43	3.9
Social Support and Engagement	Adverse Childhood Experiences (% of children ages 0-17)	+++++	10.3	2	8.9
	High-speed Internet (% of households)	+++	88.3	24	92.9
	Residential Segregation (index from 0-100)	+	71	48	42
	Volunteerism (% of adults)	+	25.3	47	51.0
	Voter Participation — Midterm (% of U.S. citizens)	++	49.5	40	65.6
PHYSICAL ENVIRONMENT		++	0.214	34	0.816
Air and Water Quality	Air Pollution (micrograms of fine particles per cubic meter)	+++++	6.4	10	4.1
	Drinking Water Violations (% of community water systems)	++++	0.3	17	0.0
	Non-smoking Regulation (% of population)*	+++++	100.0	1	100.0
	Risk-screening Environmental Indicator Score (unitless score)	++++	2,537,300	20	317
	Water Fluoridation (% of population served)	++	71.5	31	99.8
Climate Change	Climate Change Policies (number of four policies)*	+++++	4	1	4
	Transportation Energy Use (trillions of BTUs per 100,000 population)*	+++++	5.8	1	5.8
Housing and Transit	Drive Alone to Work (% of workers)	+++++	52.8	1	52.8
	Housing With Lead Risk (% of housing stock)	+	33.2	50	5.2
	Severe Housing Problems (% of occupied housing units)	+	23.5	48	11.2
CLINICAL CARE		++++	0.317	19	1.443
Access to Care	Avoided Care Due to Cost (% of adults)	++++	11.5	16	8.2
	Providers				
	Dental Providers (number per 100,000 population)	++++	70.3	11	90.6
	Mental Health Providers (number per 100,000 population)	++++	313.5	17	666.4
	Primary Care Providers (number per 100,000 population)	+++++	290.6	9	362.8
Preventive Clinical Services	Uninsured (% of population)	+++++	5.2	7	3.0
	Colorectal Cancer Screening (% of adults ages 50-75)	+++	70.0	22	77.1
	Dental Visit (% of adults)	++++	69.8	13	76.5
	Immunizations				
	Childhood Immunizations (% by age 35 months)	+	70.8	45	86.6
Quality of Care	Flu Vaccination (% adults)	+++	44.9	21	50.5
	HPV Vaccination (% of adolescents ages 13-17)	++++	57.0	19	78.9
	Dedicated Health Care Provider (% of adults)	++++	79.4	20	88.4
	Preventable Hospitalizations (discharges per 100,000 Medicare enrollees)	+++	4,234	27	1,971
BEHAVIORS		++++	0.220	19	1.072
Sleep Health	Insufficient Sleep (% of adults)	+	38.6	43	28.7
Nutrition and Physical Activity	Exercise (% of adults)	++++	24.1	18	28.5
	Fruit and Vegetable Consumption (% of adults)	+++++	11.0	3	14.1
	Physical Inactivity (% of adults)	++	27.2	32	18.5
Sexual Health	Chlamydia (cases per 100,000 population)	+	602.4	41	198.2
	High-risk HIV Behaviors (% of adults)	++	6.8	36	4.5
	Teen Births (births per 1,000 females ages 15-19)	+++++	11.7	9	7.2
Tobacco Use	E-cigarette Use (% of adults)*		5.4%		4.3
	Smoking (% of adults)	+++++	12.7	7	7.9
ALL DETERMINANTS		+++	0.065	26	0.865
HEALTH OUTCOMES		+++++	0.518	10	0.846
Behavioral Health	Depression (% of adults)*	+++++	15.3	5	11.8
	Excessive Drinking (% of adults)	+++	18.2	22	12.0
	Frequent Mental Distress (% of adults)	+++++	11.8	8	10.6
	Non-medical Drug Use (% of adults)	+++	11.8	26	6.4
Mortality	Drug Deaths (deaths per 100,000 population)*	+++	18.5	22	6.8
	Premature Death (years lost before age 75 per 100,000 population)	+++++	5,800	3	5,648
	Premature Death Racial Inequality (ratio)	++++	1.3	16	1.0
	Suicide (deaths per 100,000 population)*	+++++	8.7	2	8.6
Physical Health	Frequent Physical Distress (% of adults)	++++	11.7	18	9.3
	Low Birthweight (% of live births)	+++	8.1	23	5.9
	Low Birthweight Racial Gap (percentage point difference)	+++	6.4	25	2.4
	Multiple Chronic Conditions (% of adults)	++++	8.3	13	6.4
	Risk Factors				
	High Blood Pressure (% of adults)*	+++++	29.6	7	25.8
	High Cholesterol (% of adults)*	+++	32.6	22	28.1
OVERALL			0.181	—	0.723

* Measure not included in overall score. For measure definitions, source details and methodology, visit www.AmericasHealthRankings.org.

—Indicates data missing or suppressed.