

# Wisconsin

State Health Department Website: [dhs.wisconsin.gov](https://dhs.wisconsin.gov)

## Summary

### Strengths:

- Low economic hardship index score
- Low prevalence of high-risk HIV behaviors
- Low income inequality

### Challenges:

- High prevalence of excessive drinking
- High premature death racial inequality
- High residential segregation

### Highlights:

#### SEVERE HOUSING PROBLEMS

▼9% between 2008-2012 and 2013-2017 from 15.4% to 14.0% of occupied housing units

#### CHLAMYDIA

▲39% between 2007 and 2018 from 349.1 to 483.6 cases per 100,000 population

#### PREVENTABLE HOSPITALIZATIONS

▼12% between 2012 and 2018 from 4,227 to 3,702 discharges per 100,000 Medicare enrollees

#### LOW BIRTHWEIGHT

▲10% between 2013 and 2018 from 7.0% to 7.7% of live births

#### SMOKING

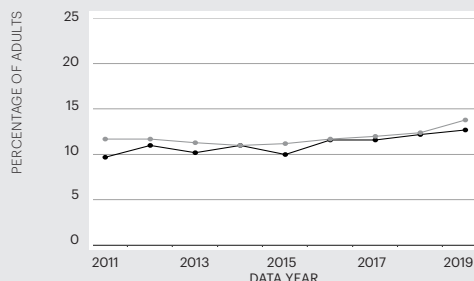
▼26% between 2011 and 2019 from 20.9% to 15.4% of adults

#### FREQUENT MENTAL DISTRESS

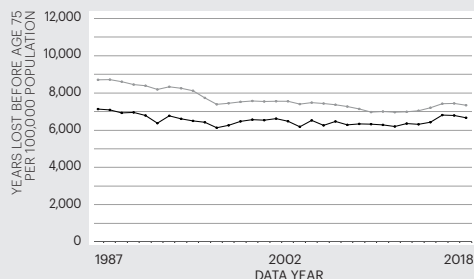
▲27% between 2015 and 2019 from 10.0% to 12.7% of adults

## Trends

### FREQUENT MENTAL DISTRESS



### PREMATURE DEATH



State — Nation —

For source details and methodology visit [www.AmericasHealthRankings.org](http://www.AmericasHealthRankings.org).

## Economic Hardship Index

The economic hardship index compares financial strain between states. It combines six population-level social and economic measures to provide a more complete picture of the difficulties faced by communities than a single measure could provide.

Measure	State Value
Crowded Housing (units with more than one person/room)	1.5%
Dependency (ages 0-17 or ages 65+)	39.2%
Education (ages 25+ without a high school diploma)	7.2%
Per Capita Income	\$34,568
Poverty (households below the poverty level)	10.2%
Unemployment (ages 16-64)	3.3%

## Multiple Chronic Conditions

Chronic conditions are medical conditions that last more than a year, require ongoing medical attention and/or limit activities of daily living. Adults with multiple chronic conditions represent one of the highest-need segments of the population.

Measure	State Value
Arthritis	27.6%
Asthma	10.2%
Cancer (excluding skin)	7.7%
Cardiovascular Disease	7.3%
Chronic Kidney Disease	2.8%
Chronic Obstructive Pulmonary Disease	5.6%
Depression	20.5%
Diabetes	8.7%

## Measures

Rating	Rank
+++++	1-10
++++	11-20
+++	21-30
++	31-40
+	41-50

		Rating	Value	Rank	Healthiest State
<b>SOCIAL &amp; ECONOMIC FACTORS</b>		<b>++++</b>	<b>0.393</b>	<b>14</b>	<b>0.965</b>
<b>Community and Family Safety</b>	Occupational Fatalities (deaths per 100,000 workers)	++++	4.0	15	2.9
	Public Health Funding (dollars per person)	+	\$55	48	\$289
	Violent Crime (offenses per 100,000 population)	++++	293	18	115
<b>Economic Resources</b>	Economic Hardship Index (index from 1-100)	+++++	25	9	1
	Food Insecurity (% of households)	+++++	8.9	6	7.8
	Income Inequality (80-20 ratio)	+++++	4.12	6	3.70
<b>Education</b>	High School Graduation (% of students)	+++++	89.7	8	91.4
	High School Graduation Racial Gap (percentage point difference)	+	24.1	47	3.9
<b>Social Support and Engagement</b>	Adverse Childhood Experiences (% of children ages 0-17)	++++	14.7	17	8.9
	High-speed Internet (% of households)	+++	88.6	22	92.9
	Residential Segregation (index from 0-100)	+	72	50	42
	Volunteerism (% of adults)	+++++	37.4	10	51.0
	Voter Participation — Midterm (% of U.S. citizens)	+++++	64.6	2	65.6
<b>PHYSICAL ENVIRONMENT</b>		<b>++</b>	<b>0.139</b>	<b>37</b>	<b>0.816</b>
<b>Air and Water Quality</b>	Air Pollution (micrograms of fine particles per cubic meter)	++++	7.0	17	4.1
	Drinking Water Violations (% of community water systems)	+	3.3	43	0.0
	Non-smoking Regulation (% of population)*	+++++	100.0	1	100.0
	Risk-screening Environmental Indicator Score (unitless score)	+++	4,334,580	28	317
	Water Fluoridation (% of population served)	++++	87.3	18	99.8
<b>Climate Change</b>	Climate Change Policies (number of four policies)*	+++	2	22	4
	Transportation Energy Use (trillions of BTUs per 100,000 population)*	++++	7.8	17	5.8
<b>Housing and Transit</b>	Drive Alone to Work (% of workers)	++	80.8	34	52.8
	Housing With Lead Risk (% of housing stock)	++	22.3	37	5.2
	Severe Housing Problems (% of occupied housing units)	++++	14.0	15	11.2
<b>CLINICAL CARE</b>		<b>++++</b>	<b>0.647</b>	<b>11</b>	<b>1.443</b>
<b>Access to Care</b>	Avoided Care Due to Cost (% of adults)	++++	10.6	12	8.2
	Providers				
	Dental Providers (number per 100,000 population)	++++	63.5	19	90.6
	Mental Health Providers (number per 100,000 population)	++	216.0	34	666.4
	Primary Care Providers (number per 100,000 population)	++++	264.5	19	362.8
<b>Preventive Clinical Services</b>	Uninsured (% of population)	+++++	5.7	8	3.0
	Colorectal Cancer Screening (% of adults ages 50-75)	+++++	75.2	5	77.1
	Dental Visit (% of adults)	+++++	71.2	10	76.5
	Immunizations				
	Childhood Immunizations (% by age 35 months)	+++	76.8	27	86.6
	Flu Vaccination (% adults)	++++	46.1	18	50.5
<b>Quality of Care</b>	HPV Vaccination (% of adolescents ages 13-17)	++++	60.5	12	78.9
	Dedicated Health Care Provider (% of adults)	++++	82.3	12	88.4
	Preventable Hospitalizations (discharges per 100,000 Medicare enrollees)	++++	3,702	17	1,971
<b>BEHAVIORS</b>		<b>+++++</b>	<b>0.526</b>	<b>10</b>	<b>1.072</b>
<b>Sleep Health</b>	Insufficient Sleep (% of adults)	+++++	32.0	10	28.7
<b>Nutrition and Physical Activity</b>	Exercise (% of adults)	+++	24.7	15	28.5
	Fruit and Vegetable Consumption (% of adults)	+++	7.5	28	14.1
	Physical Inactivity (% of adults)	+++++	23.2	10	18.5
<b>Sexual Health</b>	Chlamydia (cases per 100,000 population)	++++	483.6	20	198.2
	High-risk HIV Behaviors (% of adults)	+++++	5.3	4	4.5
	Teen Births (births per 1,000 females ages 15-19)	++++	13.0	11	7.2
<b>Tobacco Use</b>	E-cigarette Use (% of adults)*		4.8%		4.3
	Smoking (% of adults)	+++	15.4	22	7.9
<b>ALL DETERMINANTS</b>		<b>++++</b>	<b>0.445</b>	<b>12</b>	<b>0.865</b>
<b>HEALTH OUTCOMES</b>		<b>++</b>	<b>-0.151</b>	<b>33</b>	<b>0.846</b>
<b>Behavioral Health</b>	Depression (% of adults)*	++	20.5	31	11.8
	Excessive Drinking (% of adults)	+	23.6	50	12.0
	Frequent Mental Distress (% of adults)	++++	12.7	18	10.6
	Non-medical Drug Use (% of adults)	+++++	8.8	10	6.4
<b>Mortality</b>	Drug Deaths (deaths per 100,000 population)*	+++	18.9	24	6.8
	Premature Death (years lost before age 75 per 100,000 population)	++++	6,676	15	5,648
	Premature Death Racial Inequality (ratio)	++	2.1	40	1.0
	Suicide (deaths per 100,000 population)*	++++	15.3	18	8.6
<b>Physical Health</b>	Frequent Physical Distress (% of adults)	++++	11.3	14	9.3
	Low Birthweight (% of live births)	+++	7.7	21	5.9
	Low Birthweight Racial Gap (percentage point difference)	+	9.3	50	2.4
	Multiple Chronic Conditions (% of adults)	+++	9.5	22	6.4
	Risk Factors				
	High Blood Pressure (% of adults)*	++++	31.0	18	25.8
	High Cholesterol (% of adults)*	+++	33.3	25	28.1
<b>OVERALL</b>			<b>0.300</b>	<b>—</b>	<b>0.723</b>

\* Measure not included in overall score. For measure definitions, source details and methodology, visit [www.AmericasHealthRankings.org](http://www.AmericasHealthRankings.org).

—Indicates data missing or suppressed.