

Wyoming

State Health Department Website: health.wyo.gov

Summary

Strengths:

- Low incidence of chlamydia
- Low income inequality
- Low economic hardship index score

Challenges:

- High prevalence of 2+ adverse childhood experiences
- High racial gap in high school graduation
- High premature death racial inequality

Highlights:

FLU VACCINATION COVERAGE

▲18% between 2018 and 2019 from 31.0% to 36.5% of adults

SMOKING

▼20% between 2011 and 2019 from 23.0% to 18.4% of adults

DRUG DEATHS

▼39% between 2014 and 2018 from 19.0 to 11.6 deaths per 100,000 population

INCOME INEQUALITY

▲10% between 2011 and 2019 from 3.95 to 4.33

FREQUENT MENTAL DISTRESS

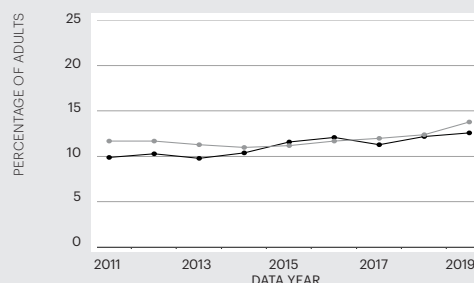
▲29% between 2013 and 2019 from 9.8% to 12.6% of adults

LOW BIRTHWEIGHT

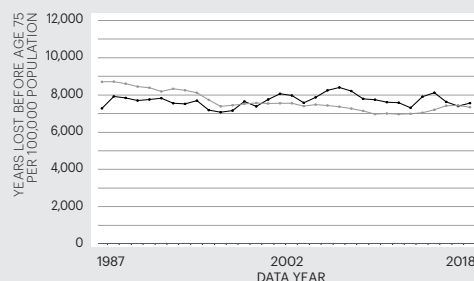
▲8% between 2017 and 2018 from 8.7% to 9.4% of live births

Trends

FREQUENT MENTAL DISTRESS



PREMATURE DEATH



State — Nation —

For source details and methodology visit www.AmericasHealthRankings.org.

Economic Hardship Index

The economic hardship index compares financial strain between states. It combines six population-level social and economic measures to provide a more complete picture of the difficulties faced by communities than a single measure could provide.

Measure	State Value
Crowded Housing (units with more than one person/room)	2.1%
Dependency (ages 0-17 or ages 65+)	40.3%
Education (ages 25+ without a high school diploma)	5.5%
Per Capita Income	\$34,104
Poverty (households below the poverty level)	10.7%
Unemployment (ages 16-64)	3.7%

Multiple Chronic Conditions

Chronic conditions are medical conditions that last more than a year, require ongoing medical attention and/or limit activities of daily living. Adults with multiple chronic conditions represent one of the highest-need segments of the population.

Measure	State Value
Arthritis	25.0%
Asthma	9.5%
Cancer (excluding skin)	7.3%
Cardiovascular Disease	8.0%
Chronic Kidney Disease	2.3%
Chronic Obstructive Pulmonary Disease	6.8%
Depression	19.2%
Diabetes	7.8%

Measures

Rating	Rank
+++++	1-10
++++	11-20
+++	21-30
++	31-40
+	41-50

		Rating	Value	Rank	Healthiest State
SOCIAL & ECONOMIC FACTORS		++	-0.214	38	0.965
Community and Family Safety	Occupational Fatalities (deaths per 100,000 workers)	+	9.9	48	2.9
	Public Health Funding (dollars per person)	++++	\$112	15	\$289
	Violent Crime (offenses per 100,000 population)	+++++	217	7	115
Economic Resources	Economic Hardship Index (index from 1-100)	++++	32	15	1
	Food Insecurity (% of households)	++	12.6	34	7.8
	Income Inequality (80-20 ratio)	++++	4.33	13	3.70
Education	High School Graduation (% of students)	++	81.7	40	91.4
	High School Graduation Racial Gap (percentage point difference)	+	24.8	48	3.9
Social Support and Engagement	Adverse Childhood Experiences (% of children ages 0-17)	+	21.5	46	8.9
	High-speed Internet (% of households)	++++	89.0	18	92.9
	Residential Segregation (index from 0-100)	+++	55	23	42
	Volunteerism (% of adults)	+++	32.7	23	51.0
	Voter Participation — Midterm (% of U.S. citizens)	++	52.1	31	65.6
PHYSICAL ENVIRONMENT		+++++	0.710	3	0.816
Air and Water Quality	Air Pollution (micrograms of fine particles per cubic meter)	+++++	4.5	2	4.1
	Drinking Water Violations (% of community water systems)	+++	0.5	26	0.0
	Non-smoking Regulation (% of population)*	+	0.3	41	100.0
	Risk-screening Environmental Indicator Score (unitless score)	+++++	18,544	4	317
	Water Fluoridation (% of population served)	++	57.1	39	99.8
Climate Change	Climate Change Policies (number of four policies)*	++	0	36	4
	Transportation Energy Use (trillions of BTUs per 100,000 population)*	+	20.4	49	5.8
Housing and Transit	Drive Alone to Work (% of workers)	++++	76.9	18	52.8
	Housing With Lead Risk (% of housing stock)	+++	16.1	24	5.2
	Severe Housing Problems (% of occupied housing units)	+++++	11.9	3	11.2
CLINICAL CARE		+	-0.672	45	1.443
Access to Care	Avoided Care Due to Cost (% of adults)	++	13.5	31	8.2
	Providers				
	Dental Providers (number per 100,000 population)	++++	63.8	17	90.6
	Mental Health Providers (number per 100,000 population)	++++	360.9	13	666.4
	Primary Care Providers (number per 100,000 population)	++	221.3	39	362.8
Preventive Clinical Services	Uninsured (% of population)	+	12.3	45	3.0
	Colorectal Cancer Screening (% of adults ages 50-75)	+	58.8	50	77.1
	Dental Visit (% of adults)	+++	67.7	22	76.5
	Immunizations				
	Childhood Immunizations (% by age 35 months)	++	73.9	37	86.6
Quality of Care	Flu Vaccination (% adults)	+	36.5	48	50.5
	HPV Vaccination (% of adolescents ages 13-17)	+	41.5	48	78.9
	Dedicated Health Care Provider (% of adults)	+	67.0	49	88.4
	Preventable Hospitalizations (discharges per 100,000 Medicare enrollees)	++++	3,300	12	1,971
BEHAVIORS		+++	0.051	25	1.072
Sleep Health	Insufficient Sleep (% of adults)	++++	32.9	15	28.7
Nutrition and Physical Activity	Exercise (% of adults)	++++	24.5	16	28.5
	Fruit and Vegetable Consumption (% of adults)	++	6.9	36	14.1
	Physical Inactivity (% of adults)	++++	24.6	17	18.5
Sexual Health	Chlamydia (cases per 100,000 population)	+++++	374.4	6	198.2
	High-risk HIV Behaviors (% of adults)	+++	6.3	23	4.5
	Teen Births (births per 1,000 females ages 15-19)	++	20.8	37	7.2
Tobacco Use	E-cigarette Use (% of adults)*		6.5%		4.3
	Smoking (% of adults)	++	18.4	37	7.9
ALL DETERMINANTS		++	-0.112	32	0.865
HEALTH OUTCOMES		+++	0.079	25	0.846
Behavioral Health	Depression (% of adults)*	+++	19.2	23	11.8
	Excessive Drinking (% of adults)	++	19.0	31	12.0
	Frequent Mental Distress (% of adults)	++++	12.6	17	10.6
	Non-medical Drug Use (% of adults)	+++	10.7	21	6.4
Mortality	Drug Deaths (deaths per 100,000 population)*	+++++	11.6	8	6.8
	Premature Death (years lost before age 75 per 100,000 population)	+++	7,570	29	5,648
	Premature Death Racial Inequality (ratio)	+	2.4	43	1.0
	Suicide (deaths per 100,000 population)*	+	25.8	50	8.6
Physical Health	Frequent Physical Distress (% of adults)	++++	11.8	20	9.3
	Low Birthweight (% of live births)	+	9.4	42	5.9
	Low Birthweight Racial Gap (percentage point difference)	+++++	3.6	5	2.4
	Multiple Chronic Conditions (% of adults)	++++	8.9	15	6.4
	Risk Factors				
	High Blood Pressure (% of adults)*	++++	30.7	13	25.8
	High Cholesterol (% of adults)*	+++++	28.1	1	28.1
OVERALL			-0.069	—	0.723

* Measure not included in overall score. For measure definitions, source details and methodology, visit www.AmericasHealthRankings.org.

— Indicates data missing or suppressed.