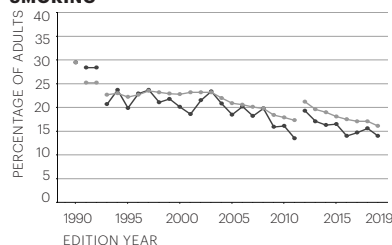


Arizona

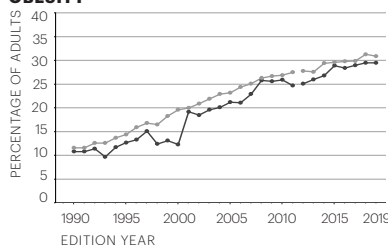
	Rating	2019 Value	2019 Rank	No. 1 State
Behaviors				
Drug Deaths (deaths per 100,000 population)	+++	20.8	29	7.2
Excessive Drinking (% of adults)	+++	17.2	21	11.3
High School Graduation (% of students)	+	78.0	48	91.0
Obesity (% of adults)	++++	29.5	15	22.9
Physical Inactivity (% of adults)	++++	22.1	15	16.4
Smoking (% of adults)	++++	14.0	11	9.0
Behaviors Total*	+++	0.004	21	0.288
Community & Environment				
Air Pollution (micrograms of fine particles per cubic meter)	+	9.7	49	4.4
Children in Poverty (% of children)	++	20.1	37	9.5
Infectious Disease (mean z score of chlamydia, pertussis and <i>Salmonella</i>)*	+++	-0.100	24	-1.230
Chlamydia (cases per 100,000 population)	++	564.4	39	228.0
Pertussis (cases per 100,000 population)	+++	6.0	29	0.7
<i>Salmonella</i> (cases per 100,000 population)	++++	12.4	12	6.5
Occupational Fatalities (deaths per 100,000 workers)	++++	4.3	19	2.7
Violent Crime (offenses per 100,000 population)	+	475	41	112
Community & Environment Total*	+	-0.092	43	0.307
Policy				
Immunizations—Adolescents (mean z score of HPV, meningococcal and Tdap)*	++	-0.457	37	1.863
HPV Females (% ages 13–17)	++	51.0	36	76.1
HPV Males (% ages 13–17)	+++	50.4	25	80.0
Meningococcal (% ages 13–17)	++++	89.1	17	98.7
Tdap (% ages 13–17)	+	82.9	47	97.5
Immunizations—Children (% ages 19–35 months)	+	66.5	44	82.1
Public Health Funding (dollars per person)	+	\$53	47	\$281
Uninsured (% of population)	++	10.4	39	2.8
Policy Total*	+	-0.081	45	0.206
Clinical Care				
Dentists (number per 100,000 population)	+++	54.4	25	82.7
Low Birthweight (% of live births)	++++	7.5	15	6.2
Mental Health Providers (number per 100,000 population)	+	132.9	47	626.6
Preventable Hospitalizations (discharges per 1,000 Medicare enrollees)	+++++	36.1	8	23.3
Primary Care Physicians (number per 100,000 population)	++	125.8	40	274.9
Clinical Care Total*	+++	-0.019	29	0.188
All Determinants*	++	-0.187	34	0.687
Outcomes				
Cancer Deaths (deaths per 100,000 population)	+++++	168.5	4	149.8
Cardiovascular Deaths (deaths per 100,000 population)	+++++	223.8	7	193.8
Diabetes (% of adults)	+++	10.8	23	7.0
Disparity in Health Status (% difference by high school education)	++	27.1	31	14.5
Frequent Mental Distress (% of adults)	+++	12.5	27	9.3
Frequent Physical Distress (% of adults)	++	14.2	38	9.6
Infant Mortality (deaths per 1,000 live births)	++++	5.6	16	3.8
Premature Death (years lost before age 75 per 100,000 population)	+++	7,467	24	5,665
All Outcomes*	+++	0.039	23	0.234
OVERALL*	++	-0.148	31	0.850

* Value indicates z score. Negative scores are below U.S. value; positive scores are above U.S. value. Years reflect edition year, not data source year. For measure definitions, including data sources and years, see Table 9.

SMOKING



OBESITY

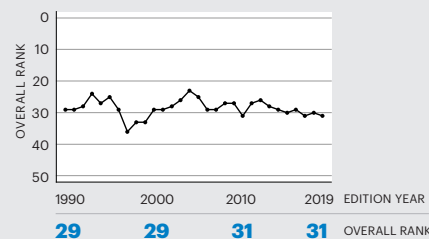


State — Nation

For source details and methodology visit www.AmericasHealthRankings.org.

OVERALL
RANK:
31

Change: ▼ 1



Strengths:

- Low prevalence of smoking
- Low prevalence of physical inactivity
- Low cardiovascular death rate

Challenges:

- Low percentage of high school graduation
- High levels of air pollution
- Low Tdap immunization coverage among adolescents

Highlights:

- Since 2007, drug deaths increased 53% from 13.6 to 20.8 deaths per 100,000 population
- Since 2012, children in poverty decreased 26% from 27.2% to 20.1% of children
- Since 2003, dentists increased 21% from 45.0 to 54.4 per 100,000 population
- In the past three years, air pollution increased 4% from 9.3 to 9.7 micrograms of fine particles per cubic meter
- Since 1990, infant mortality decreased 40% from 9.4 to 5.6 deaths per 1,000 live births
- Since 2012, diabetes increased 13% from 9.6% to 10.8% of adults

Senior Report Rank: 31
Health of Women and Children
Report Rank: 37

State Health Department Website:
azdhs.gov