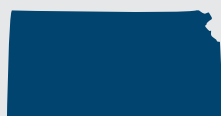
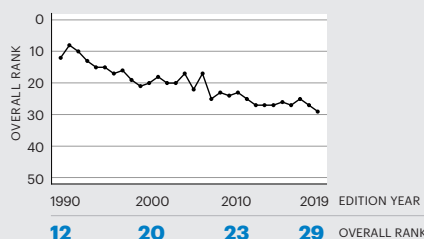


Kansas

OVERALL
RANK:
29



Change: ▼ 2



Strengths:

- Low drug death rate
- Low prevalence of low birthweight
- Small difference in health status by high school education

Challenges:

- High prevalence of obesity
- Low rate of dentists
- Low HPV immunization coverage among adolescent females

Highlights:

- Since 2012, obesity increased 16% from 29.6% to 34.4% of adults
- In the past 10 years, chlamydia increased 58% from 294.7 to 465.3 cases per 100,000 population
- In the past three years, violent crime increased 13% from 390 to 439 offenses per 100,000 population
- In the past year, diabetes increased 10% from 10.5% to 11.6% of adults
- In the past two years, disparity in health status decreased 32% from 31.7% to 21.6%
- In the past year, frequent mental distress increased 10% from 11.4% to 12.5% of adults

Senior Report Rank: 28
Health of Women and Children
Report Rank: 25

State Health Department Website:
kdheks.gov

	Rating	2019 Value	2019 Rank	No. 1 State
Behaviors				
Drug Deaths (deaths per 100,000 population)	+++++	11.6	6	7.2
Excessive Drinking (% of adults)	++++	171	20	11.3
High School Graduation (% of students)	+++	86.5	24	91.0
Obesity (% of adults)	++	34.4	38	22.9
Physical Inactivity (% of adults)	+++++	22.5	20	16.4
Smoking (% of adults)	+++	17.2	30	9.0
Behaviors Total*	+++	-0.008	23	0.288

Community & Environment				
Air Pollution (micrograms of fine particles per cubic meter)	++++	7.0	18	4.4
Children in Poverty (% of children)	+++	14.9	21	9.5
Infectious Disease (mean z score of chlamydia, pertussis and <i>Salmonella</i>)*	+++	-0.087	25	-1.230
Chlamydia (cases per 100,000 population)	++++	465.3	19	228.0
Pertussis (cases per 100,000 population)	++	7.0	34	0.7
Salmonella (cases per 100,000 population)	++	16.9	31	6.5
Occupational Fatalities (deaths per 100,000 workers)	++	5.1	32	2.7
Violent Crime (offenses per 100,000 population)	++	439	36	112
Community & Environment Total*	+++	0.058	25	0.307

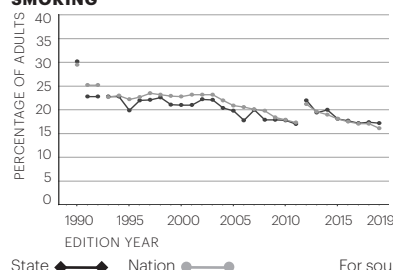
Policy				
Immunizations—Adolescents (mean z score of HPV, meningococcal and Tdap)*	+	-0.870	45	1.863
HPV Females (% ages 13–17)	+	38.1	49	76.1
HPV Males (% ages 13–17)	++	43.2	34	80.0
Meningococcal (% ages 13–17)	+	75.3	46	98.7
Tdap (% ages 13–17)	+++	89.4	23	97.5
Immunizations—Children (% ages 19–35 months)	++	69.5	32	82.1
Public Health Funding (dollars per person)	++	\$60	40	\$281
Uninsured (% of population)	++	8.8	31	2.8
Policy Total*	++	-0.043	39	0.206

Clinical Care				
Dentists (number per 100,000 population)	++	50.1	38	82.7
Low Birthweight (% of live births)	++++	7.4	14	6.2
Mental Health Providers (number per 100,000 population)	++	196.7	35	626.6
Preventable Hospitalizations (discharges per 1,000 Medicare enrollees)	++	51.3	32	23.3
Primary Care Physicians (number per 100,000 population)	++	138.1	32	274.9
Clinical Care Total*	++	-0.042	34	0.188
All Determinants*	+++	-0.034	30	0.687

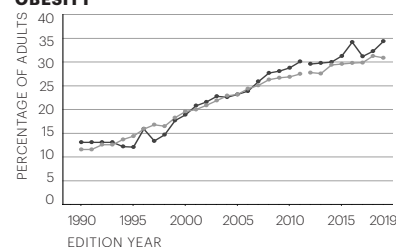
Outcomes				
Cancer Deaths (deaths per 100,000 population)	+++	194.7	29	149.8
Cardiovascular Deaths (deaths per 100,000 population)	++	261.8	31	193.8
Diabetes (% of adults)	++	11.6	31	7.0
Disparity in Health Status (% difference by high school education)	+++++	21.6	10	14.5
Frequent Mental Distress (% of adults)	+++	12.5	27	9.3
Frequent Physical Distress (% of adults)	+++++	11.5	17	9.6
Infant Mortality (deaths per 1,000 live births)	+++	6.0	26	3.8
Premature Death (years lost before age 75 per 100,000 population)	+++	7,608	26	5,665
All Outcomes*	+++	0.013	26	0.234
OVERALL*	+++	-0.021	29	0.850

* Value indicates z score. Negative scores are below U.S. value; positive scores are above U.S. value. Years reflect edition year, not data source year. For measure definitions, including data sources and years, see Table 9.

SMOKING



OBESITY



For source details and methodology visit www.AmericasHealthRankings.org.