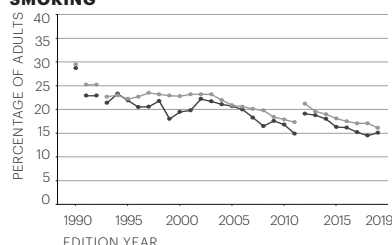


# Minnesota

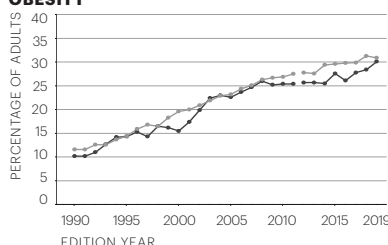
	Rating	2019 Value	2019 Rank	No. 1 State
<b>Behaviors</b>				
Drug Deaths (deaths per 100,000 population)	+++++	12.1	7	7.2
Excessive Drinking (% of adults)	+	21.8	44	11.3
High School Graduation (% of students)	++	82.7	34	91.0
Obesity (% of adults)	++++	30.1	20	22.9
Physical Inactivity (% of adults)	+++++	20.5	8	16.4
Smoking (% of adults)	++++	15.1	18	9.0
<b>Behaviors Total*</b>	++++	0.022	18	0.288
<b>Community &amp; Environment</b>				
Air Pollution (micrograms of fine particles per cubic meter)	++++	6.6	11	4.4
Children in Poverty (% of children)	+++++	11.7	5	9.5
Infectious Disease (mean z score of chlamydia, pertussis and <i>Salmonella</i> )*	++	0.193	38	-1.230
Chlamydia (cases per 100,000 population)	+++++	422.1	9	228.0
Pertussis (cases per 100,000 population)	+	13.1	47	0.7
<i>Salmonella</i> (cases per 100,000 population)	++	17.1	34	6.5
Occupational Fatalities (deaths per 100,000 workers)	+++++	3.3	5	2.7
Violent Crime (offenses per 100,000 population)	+++++	220	10	112
<b>Community &amp; Environment Total*</b>	+++++	0.186	6	0.307
<b>Policy</b>				
Immunizations—Adolescents (mean z score of HPV, meningococcal and Tdap)*	++++	0.548	12	1.863
HPV Females (% ages 13–17)	+++++	62.2	9	76.1
HPV Males (% ages 13–17)	++++	55.6	11	80.0
Meningococcal (% ages 13–17)	++++	88.9	18	98.7
Tdap (% ages 13–17)	++++	90.7	12	97.5
Immunizations—Children (% ages 19–35 months)	+	66.1	48	82.1
Public Health Funding (dollars per person)	+++	\$85	29	\$281
Uninsured (% of population)	+++++	4.4	4	2.8
<b>Policy Total*</b>	++++	0.059	16	0.206
<b>Clinical Care</b>				
Dentists (number per 100,000 population)	++++	58.5	20	82.7
Low Birthweight (% of live births)	+++++	6.7	4	6.2
Mental Health Providers (number per 100,000 population)	+++	250.7	23	626.6
Preventable Hospitalizations (discharges per 1,000 Medicare enrollees)	+++++	36.6	10	23.3
Primary Care Physicians (number per 100,000 population)	++++	169.5	16	274.9
<b>Clinical Care Total*</b>	++++	0.076	12	0.188
<b>All Determinants*</b>	++++	0.343	11	0.687
<b>Outcomes</b>				
Cancer Deaths (deaths per 100,000 population)	++++	181.8	14	149.8
Cardiovascular Deaths (deaths per 100,000 population)	+++++	193.8	1	193.8
Diabetes (% of adults)	+++++	8.9	7	7.0
Disparity in Health Status (% difference by high school education)	+++	26.7	29	14.5
Frequent Mental Distress (% of adults)	+++++	10.5	4	9.3
Frequent Physical Distress (% of adults)	+++++	9.8	3	9.6
Infant Mortality (deaths per 1,000 live births)	++++	4.9	11	3.8
Premature Death (years lost before age 75 per 100,000 population)	+++++	5,683	2	5,665
<b>All Outcomes*</b>	+++++	0.228	2	0.234
<b>OVERALL*</b>	+++++	0.571	7	0.850

\* Value indicates z score. Negative scores are below U.S. value; positive scores are above U.S. value. Years reflect edition year, not data source year. For measure definitions, including data sources and years, see Table 9.

## SMOKING



## OBESITY



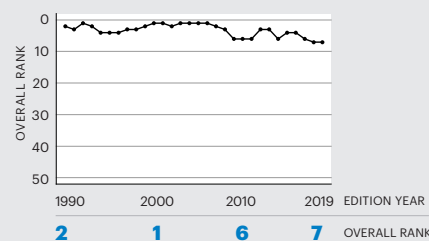
State — Nation

For source details and methodology visit [www.AmericasHealthRankings.org](http://www.AmericasHealthRankings.org).

## OVERALL RANK:

# 7

Change: **no change**



## Strengths:

- Low percentage of children in poverty
- Low prevalence of low birthweight
- Low cardiovascular death rate

## Challenges:

- High prevalence of excessive drinking
- Low immunization coverage among children
- Low percentage of high school graduation

## Highlights:

- Since 2013, high school graduation increased 7% from 77.0% to 82.7% of students
- Since 2013, air pollution decreased 19% from 8.1 to 6.6 micrograms of fine particles per cubic meter
- Since 1993, low birthweight increased 31% from 5.1% to 6.7% of live births
- Since 2013, chlamydia increased 78% from 237.5 to 422.1 cases per 100,000 population
- In the past two years, mental health providers increased 16% from 216.8 to 250.7 per 100,000 population
- In the past four years, frequent mental distress increased 27% from 8.3% to 10.5% of adults

## Senior Report Rank: 4

## Health of Women and Children

## Report Rank: 6

## State Health Department Website:

[health.state.mn.us](http://health.state.mn.us)