

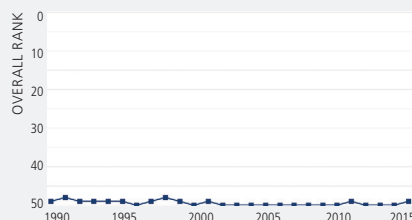
Mississippi

Overall Rank: 49

Change: ▲ 1

Determinants Rank: 49

Outcomes Rank: 46



Strengths:

- Small disparity in health status by education level
- Low prevalence of excessive drinking
- Low rate of drug deaths

Challenges:

- Low immunization coverage among adolescents
- High prevalence of physical inactivity
- High premature death rate

Ranking:

Mississippi is 49th this year; it was 50th in 2014.

Highlights:

- In the past year, physical inactivity decreased 17% from 38.1% to 31.6% of adults.
- In the past year, premature death increased 4% from 10,354 to 10,744 years lost per 100,000 population.
- In the past 2 years, immunizations among children aged 19 to 35 months decreased 9% from 77.5% to 70.7%.
- In the past 2 years, disparity in health status by education level decreased 30% from 21.2% to 14.9%.
- Since 1990, cancer deaths increased 15% from 197.2 to 225.8 per 100,000 population.

State Health Department Website:
www.msdh.state.ms.us

	Value	2015 Rank	No 1 State
Behaviors			
Smoking (% of adult population)	23.0	45	9.7
Excessive Drinking (% of adult population)	13.8	7	10.3
Drug Deaths (deaths per 100,000 population)	10.7	9	2.7
Obesity (% of adult population)	35.5	48	21.3
Physical Inactivity (% of adult population)	31.6	50	16.4
High School Graduation (% of students)	75.5	43	89.7
Behaviors Total*	-0.25	48	-0.33

Community & Environment			
Violent Crime (offenses per 100,000 population)	275	18	121
Occupational Fatalities (deaths per 100,000 workers)	7.9	48	2.0
Children in Poverty (% of children)	29.4	47	10.6
Infectious Disease (combined value <i>Chlamydia</i> , Pertussis, <i>Salmonella</i>)*	0.92	47	-1.09
<i>Chlamydia</i> (cases per 100,000 population)	585.1	46	236.2
Pertussis (cases per 100,000 population)	2.0	3	1.0
<i>Salmonella</i> (cases per 100,000 population)	30.7	49	8.4
Air Pollution (micrograms of fine particles per cubic meter)	8.9	27	5.0
Community & Environment Total*	-0.06	39	-0.24

Policy			
Lack of Health Insurance (% of population)	15.8	43	3.5
Public Health Funding (dollars per person)	\$60	31	\$227
Immunizations—Children (% of children aged 19 to 35 months)	70.7	31	84.7
Immunizations—Adolescents (combined value of HPV, MCV4, and Tdap)*	-1.96	50	1.31
HPV Females (% of females aged 13 to 17 years)	24.6	48	54.0
HPV Males (% of males aged 13 to 17 years)	0.0	50	42.9
MCV4 (% of adolescents aged 13 to 17 years)	46.0	50	95.2
Tdap (% of adolescents aged 13 to 17 years)	70.8	49	94.8
Policy Total*	-0.11	48	0.16

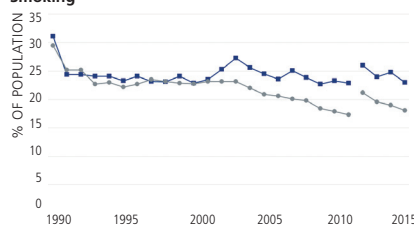
Clinical Care			
Low Birthweight (% of live births)	11.5	50	5.8
Primary Care Physicians (number per 100,000 population)	84.7	49	206.7
Dentists (number per 100,000 population)	42.6	49	81.2
Preventable Hospitalizations (discharges per 1,000 Medicare beneficiaries)	73.6	48	24.4
Clinical Care Total*	-0.24	50	0.17
All Determinants*	-0.67	49	0.67

Outcomes			
Diabetes (% of adult population)	13.0	48	7.1
Poor Mental Health Days (days in previous 30)	4.2	44	2.7
Poor Physical Health Days (days in previous 30)	4.1	36	2.9
Disparity in Health Status (% difference by education level)**	14.9	1	14.9
Infant Mortality (deaths per 1,000 live births)	9.3	50	4.2
Cardiovascular Deaths (deaths per 100,000 population)	344.5	50	186.5
Cancer Deaths (deaths per 100,000 population)	225.8	49	146.1
Premature Death (years lost per 100,000 population)	10,744	50	5,414
All Outcomes*	-0.29	46	0.33
Overall*	-0.95	49	0.89

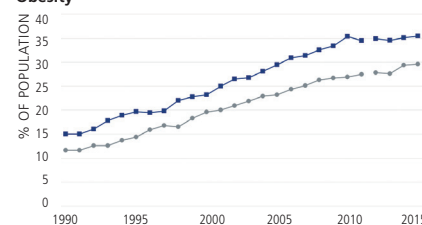
*Negative value denotes below US average; positive value denotes above US average.

**Difference in the percentage of adults aged 25 and older with vs. without a high school education who report their health is very good or excellent.

Smoking



Obesity



State — Nation — The 2012 to 2015 data in the above graphs are not directly comparable with prior years. See Methodology for additional information.