

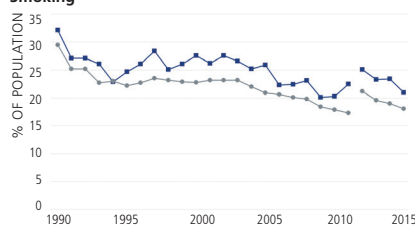
## Ohio

	Value	2015 Rank	No 1 State
<b>Behaviors</b>			
Smoking (% of adult population)	21.0	39	9.7
Excessive Drinking (% of adult population)	19.1	37	10.3
Drug Deaths (deaths per 100,000 population)	18.9	43	2.7
Obesity (% of adult population)	32.6	43	21.3
Physical Inactivity (% of adult population)	25.0	36	16.4
High School Graduation (% of students)	82.2	29	89.7
<b>Behaviors Total*</b>	-0.16	44	-0.33
<b>Community &amp; Environment</b>			
Violent Crime (offenses per 100,000 population)	286	20	121
Occupational Fatalities (deaths per 100,000 workers)	3.9	18	2.0
Children in Poverty (% of children)	22.1	32	10.6
Infectious Disease (combined value <i>Chlamydia</i> , <i>Pertussis</i> , <i>Salmonella</i> )*	-0.20	21	-1.09
<i>Chlamydia</i> (cases per 100,000 population)	460.2	32	236.2
<i>Pertussis</i> (cases per 100,000 population)	12.7	34	1.0
<i>Salmonella</i> (cases per 100,000 population)	10.2	7	8.4
Air Pollution (micrograms of fine particles per cubic meter)	10.6	45	5.0
<b>Community &amp; Environment Total*</b>	0.01	28	-0.24
<b>Policy</b>			
Lack of Health Insurance (% of population)	9.7	13	3.5
Public Health Funding (dollars per person)	\$42	45	\$227
Immunizations—Children (% of children aged 19 to 35 months)	68.1	36	84.7
Immunizations—Adolescents (combined value of HPV, MCV4, and Tdap)*	-0.46	33	1.31
HPV Females (% of females aged 13 to 17 years)	35.2	37	54.0
HPV Males (% of males aged 13 to 17 years)	23.3	18	42.9
MCV4 (% of adolescents aged 13 to 17 years)	73.7	32	95.2
Tdap (% of adolescents aged 13 to 17 years)	83.0	38	94.8
<b>Policy Total*</b>	-0.01	29	0.16
<b>Clinical Care</b>			
Low Birthweight (% of live births)	8.5	35	5.8
Primary Care Physicians (number per 100,000 population)	129.7	15	206.7
Dentists (number per 100,000 population)	51.9	31	81.2
Preventable Hospitalizations (discharges per 1,000 Medicare beneficiaries)	64.9	44	24.4
<b>Clinical Care Total*</b>	-0.07	35	0.17
<b>All Determinants*</b>	-0.23	36	0.67
<b>Outcomes</b>			
Diabetes (% of adult population)	11.7	42	7.1
Poor Mental Health Days (days in previous 30)	4.1	39	2.7
Poor Physical Health Days (days in previous 30)	4.1	36	2.9
Disparity in Health Status (% difference by education level)**	25.3	12	14.9
Infant Mortality (deaths per 1,000 live births)	7.4	44	4.2
Cardiovascular Deaths (deaths per 100,000 population)	276.1	40	186.5
Cancer Deaths (deaths per 100,000 population)	207.6	41	146.1
Premature Death (years lost per 100,000 population)	7,991	38	5,414
<b>All Outcomes*</b>	-0.14	41	0.33
<b>Overall*</b>	-0.37	39	0.89

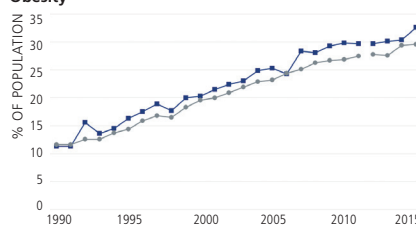
\*Negative value denotes below US average; positive value denotes above US average.

\*\*Difference in the percentage of adults aged 25 and older with vs. without a high school education who report their health is very good or excellent.

## Smoking



## Obesity



State — Nation — The 2012 to 2015 data in the above graphs are not directly comparable with prior years. See Methodology for additional information.

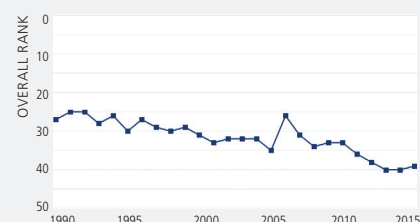
## Overall Rank: 39



Change: ▲ 1

Determinants Rank: 36

Outcomes Rank: 41



## Strengths:

- Low incidence of *Salmonella*
- Low percentage of uninsured population
- Ready availability of primary care physicians

## Challenges:

- High prevalence of obesity
- Low per capita public health funding
- High prevalence of diabetes

## Ranking:

Ohio is 39th this year; it was 40th in 2014.

## Highlights:

- In the past year, physical inactivity decreased 12% from 28.5% to 25.0% of adults.
- In the past year, children in poverty increased 31% from 16.9% to 22.1% of children.
- In the past 2 years, drug deaths increased 35% from 14.0 to 18.9 per 100,000 population.
- In the past 10 years, premature death increased 3% from 7,762 to 7,991 years lost per 100,000 population.
- Since 1990, cardiovascular deaths decreased 37% from 436.3 to 276.1 per 100,000 population.

State Health Department Website:  
www.odh.ohio.gov